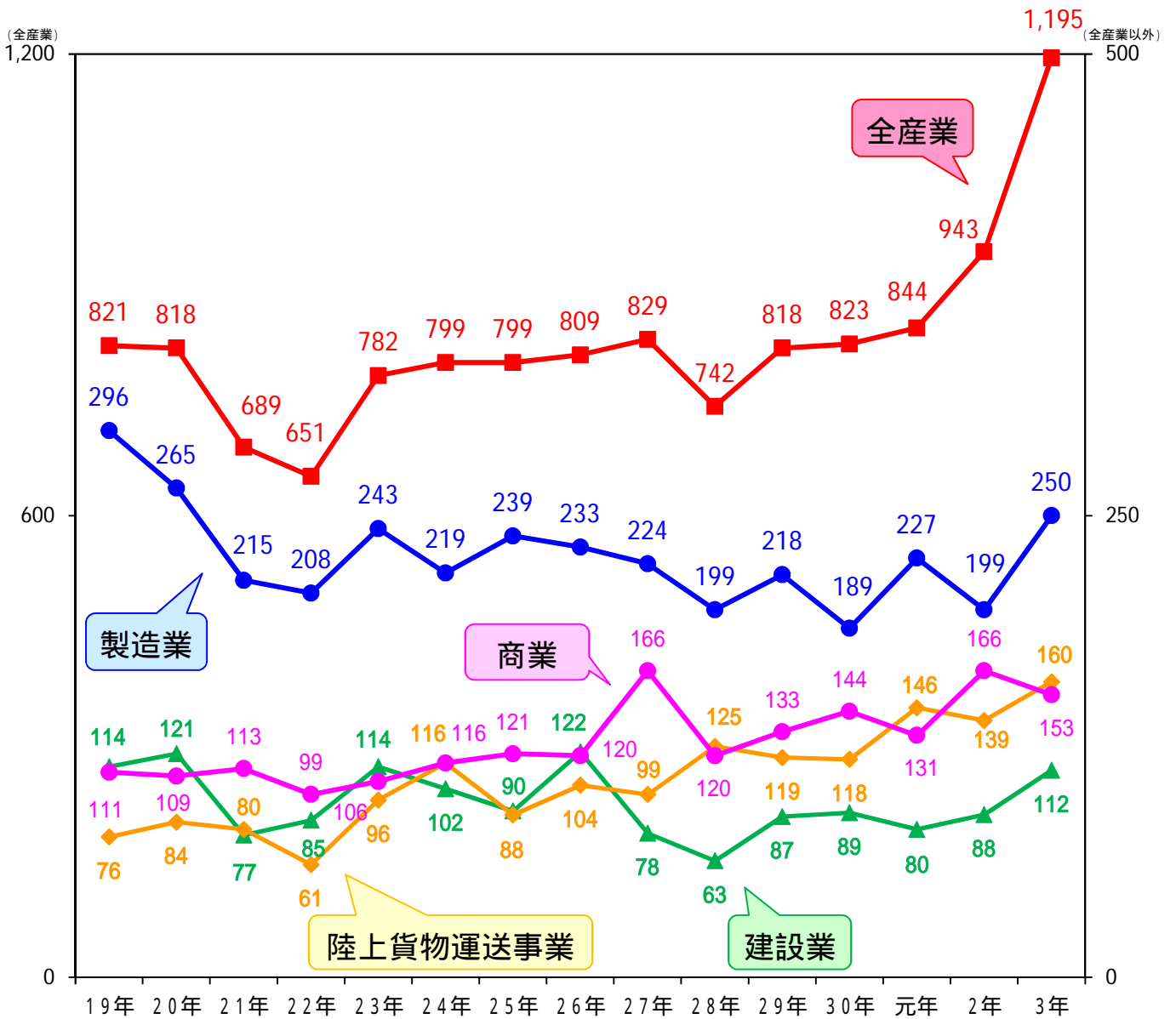


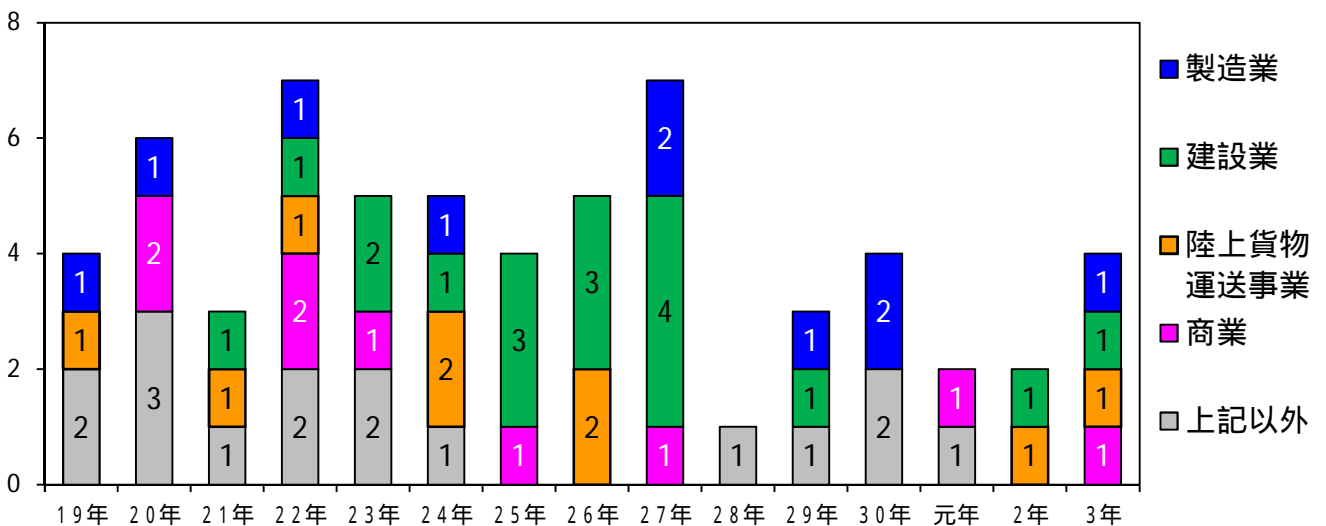
労働災害の現状

川越労働基準監督署

業種別の死傷者数の推移

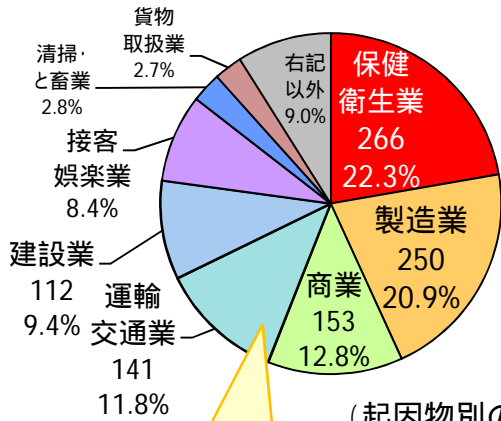


業種別の死亡者数の推移

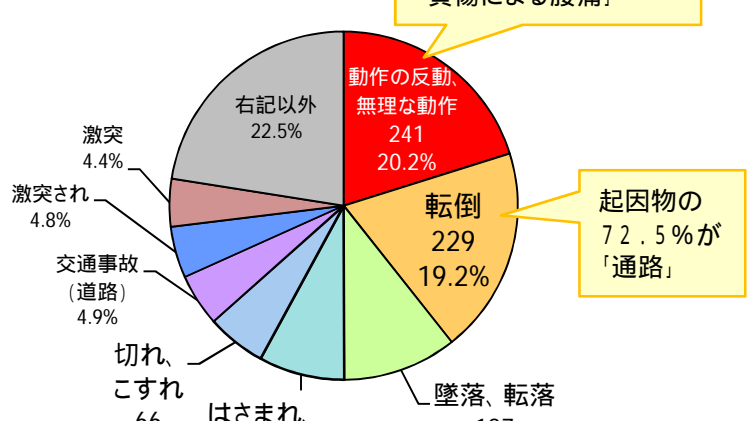


令和3年 死傷災害発生状況（川越署）

(業種別の割合)



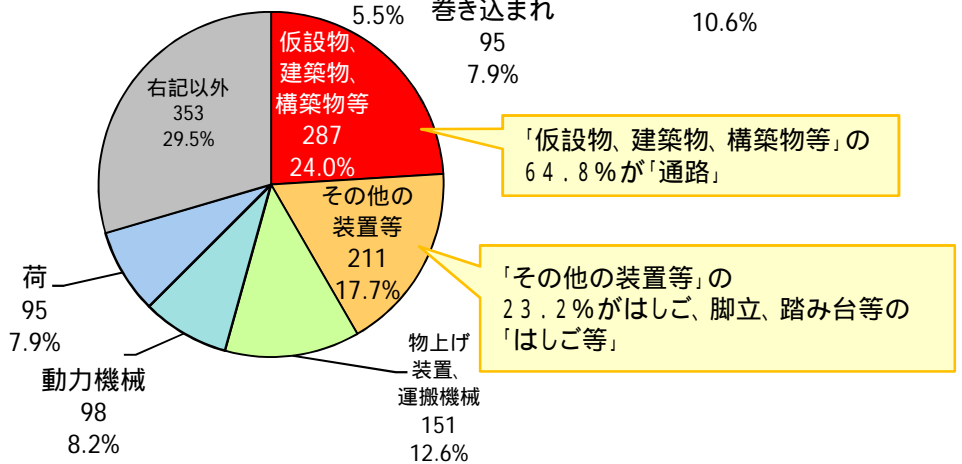
(事故の型別の割合)



41.1%は傷病性質が「負傷による腰痛」

起因物の72.5%が「通路」

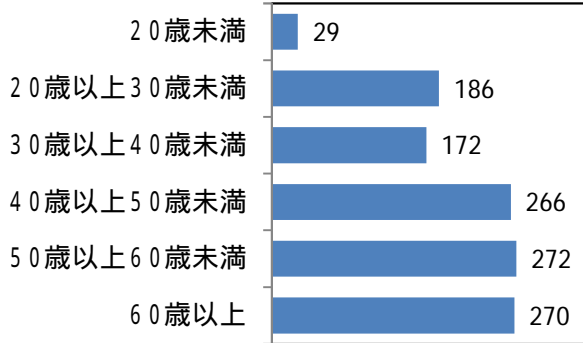
(起因物別の割合)



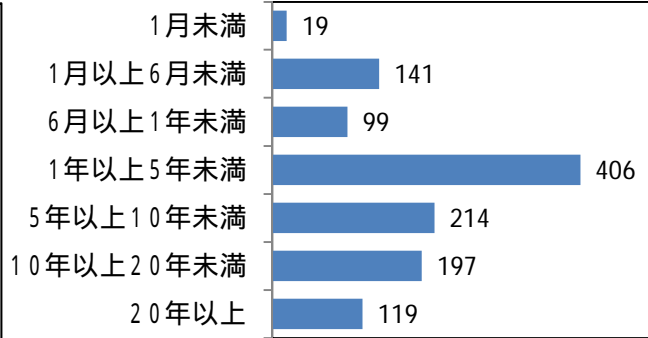
「仮設物、建築物、構築物等」の64.8%が「通路」

「その他の装置等」の23.2%がはしご、脚立、踏み台等の「はしご等」

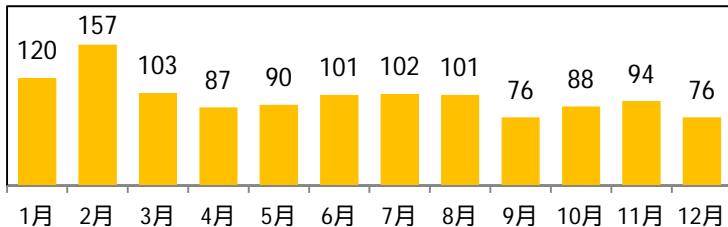
(年齢別の状況)



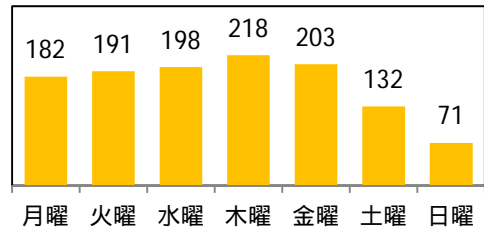
(経験期間別の状況)



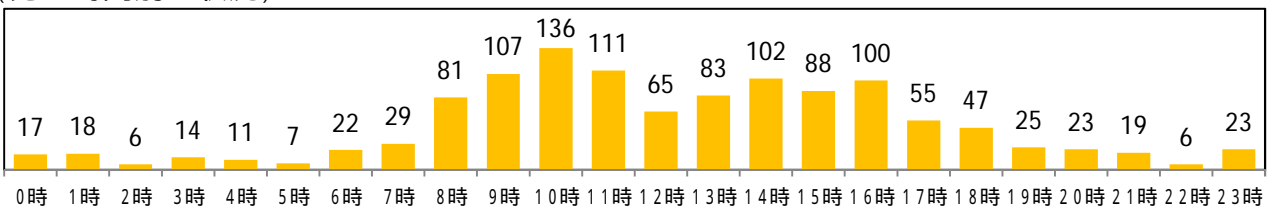
(発生月別の状況)



(発生曜日別の状況)



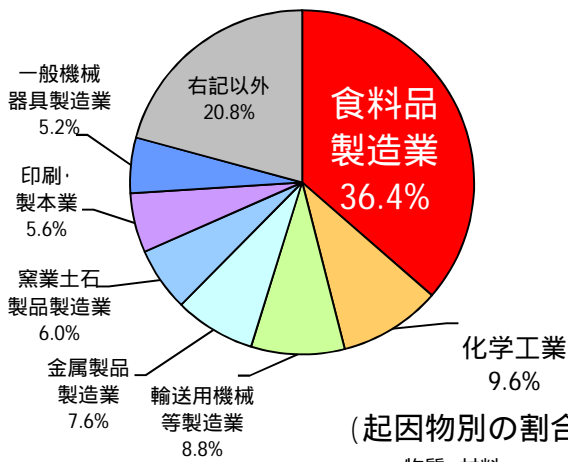
(発生時間別の状況)



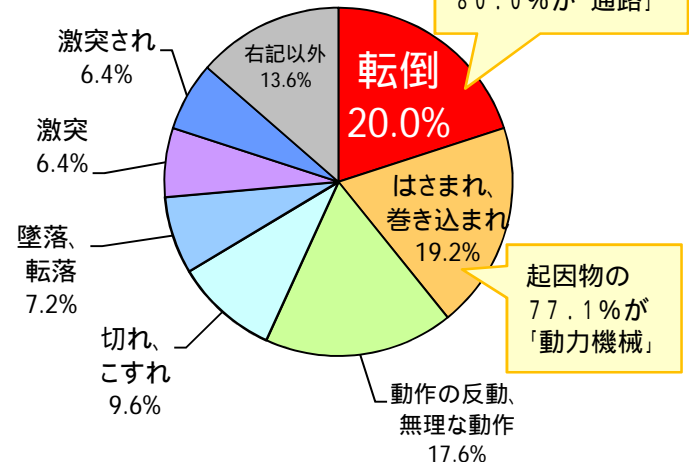
(休業4日以上の死傷災害1,195件を集計)

令和3年 製造業における死傷災害発生状況（川越署）

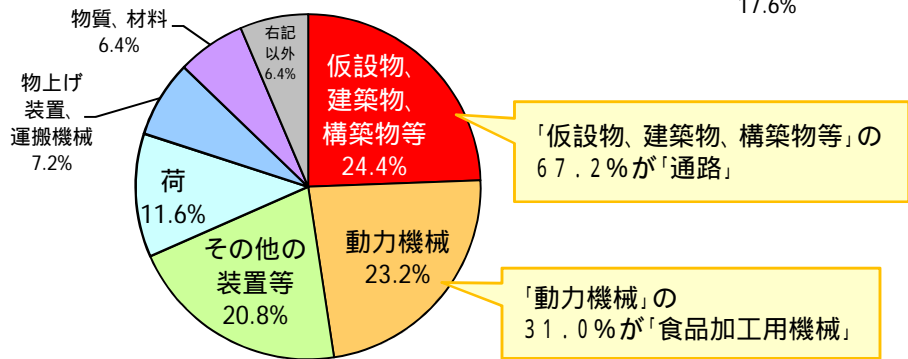
(業種別の割合)



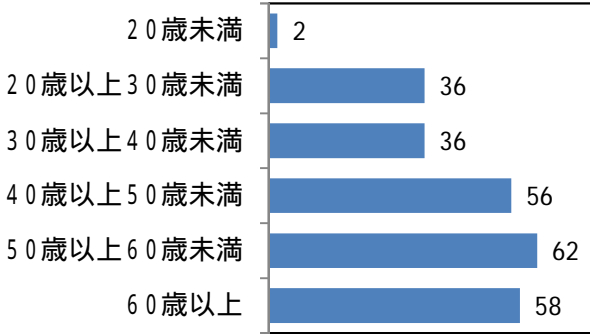
(事故の型別の割合)



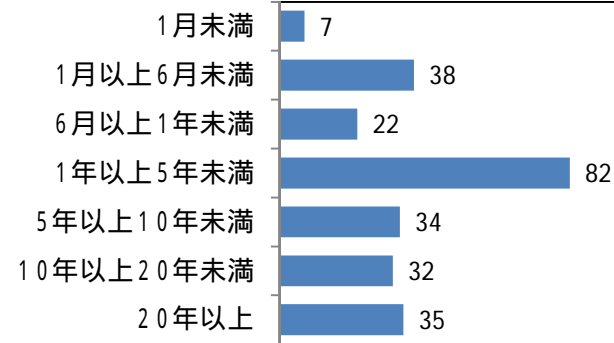
(起因物別の割合)



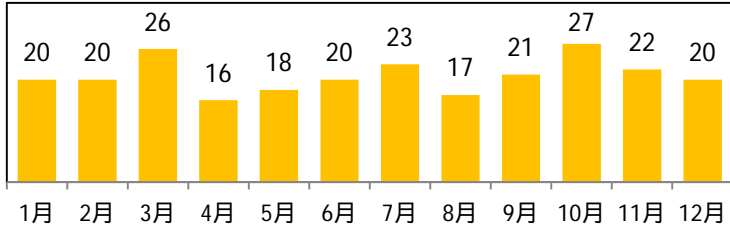
(年齢別の割合)



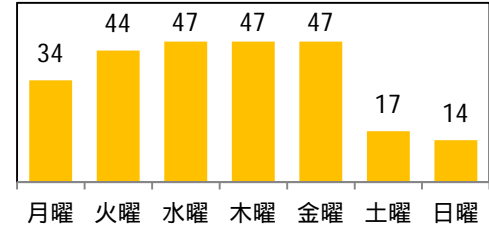
(経験期間別の状況)



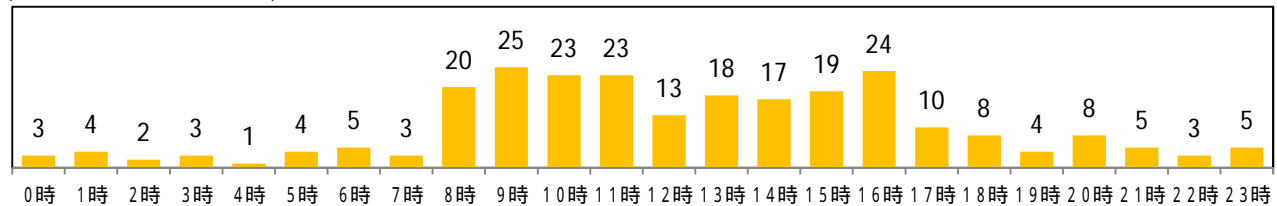
(発生月別の状況)



(発生曜日別の状況)



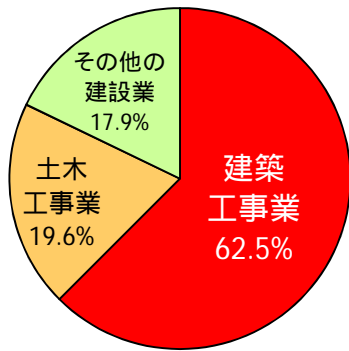
(発生時間別の状況)



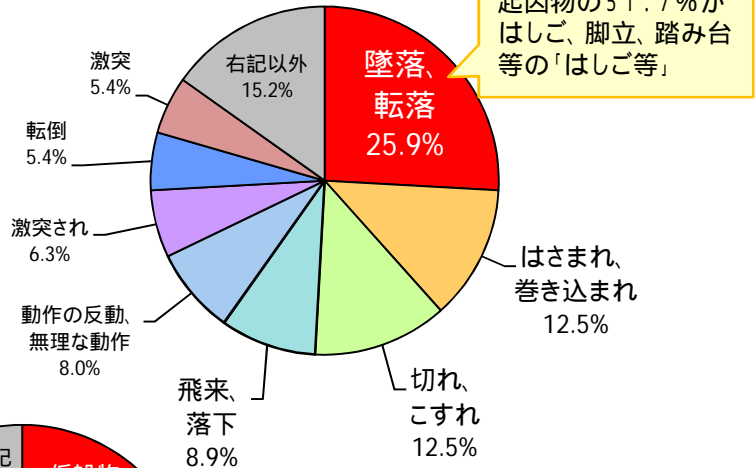
(休業4日以上の死傷災害250件を集計)

令和3年 建設業における死傷災害発生状況（川越署）

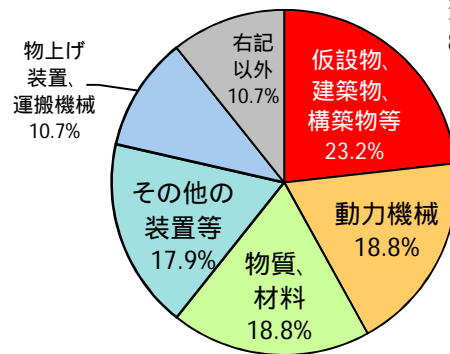
(業種別の割合)



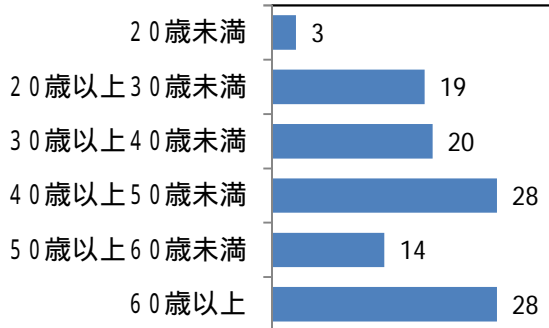
(事故の型別の割合)



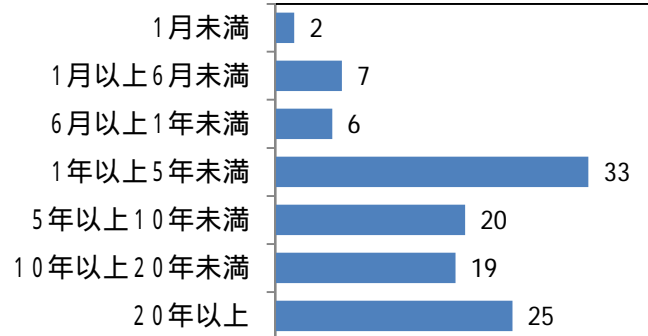
(起因物別の割合)



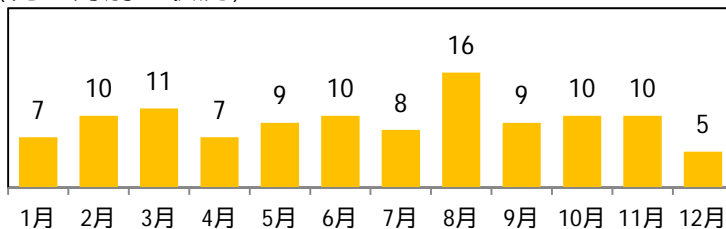
(年齢別の割合)



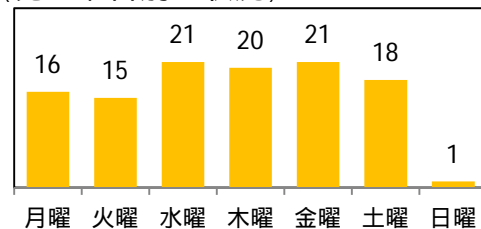
(経験期間別の状況)



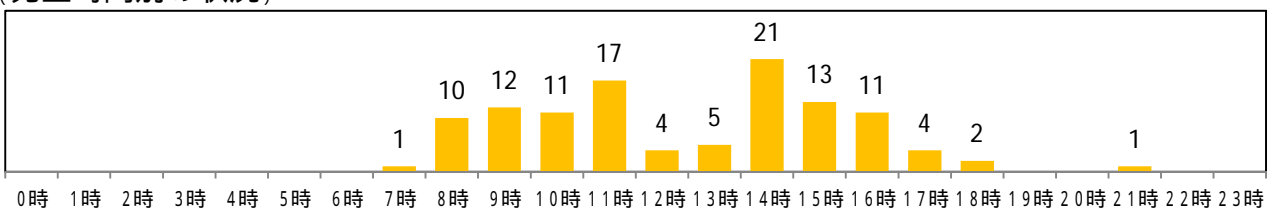
(発生月別の状況)



(発生曜日別の状況)



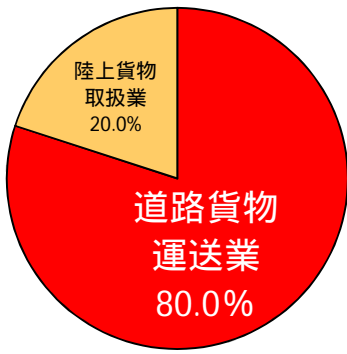
(発生時間別の状況)



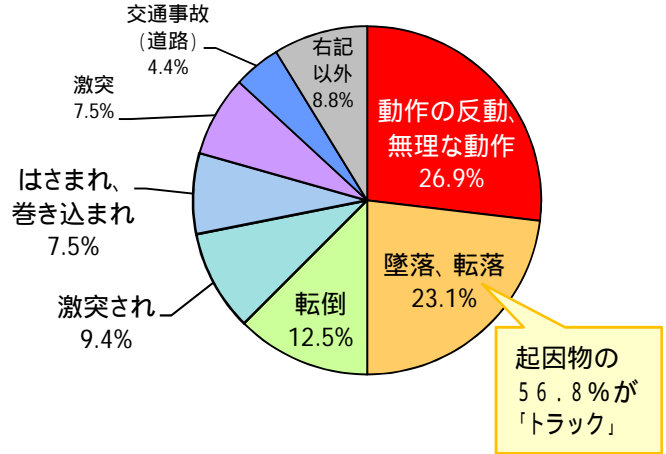
(休業4日以上の死傷災害112件を集計)

令和3年 陸上貨物運送事業における死傷災害発生状況（川越署）

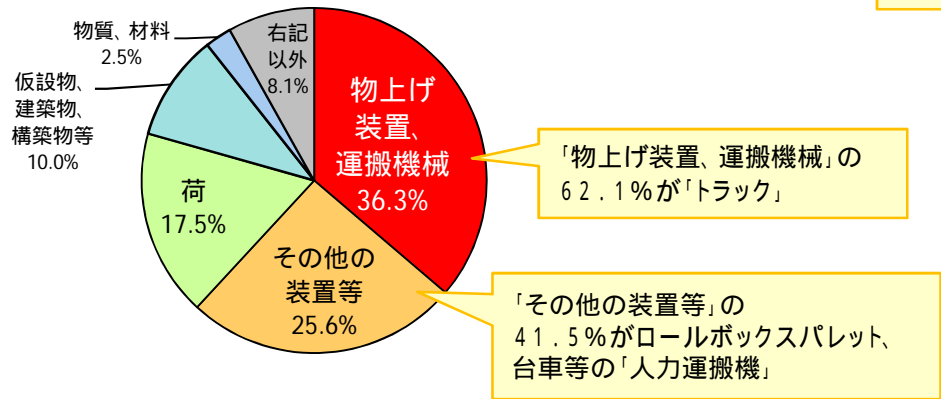
(業種別の割合)



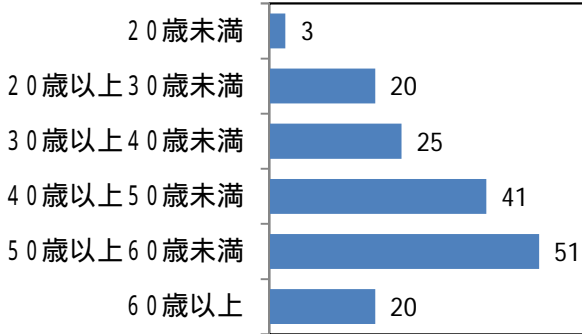
(事故の型別の割合)



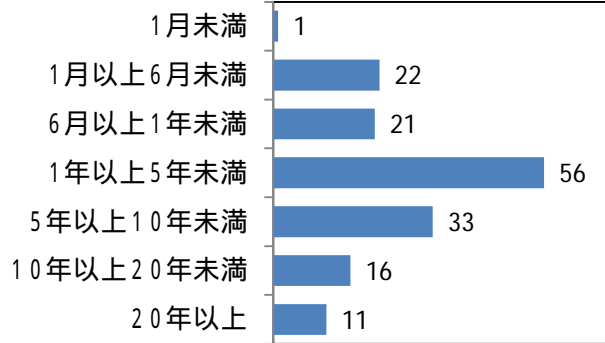
(起因物別の割合)



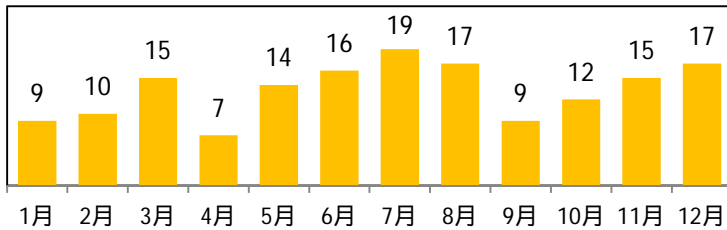
(年齢別の割合)



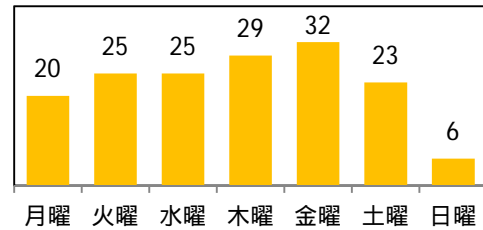
(経験期間別の状況)



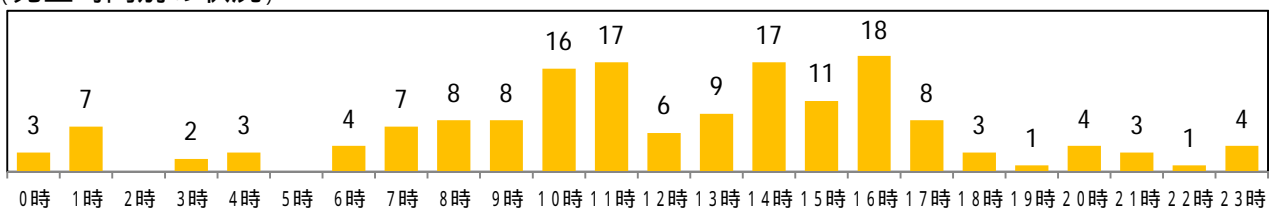
(発生月別の状況)



(発生曜日別の状況)



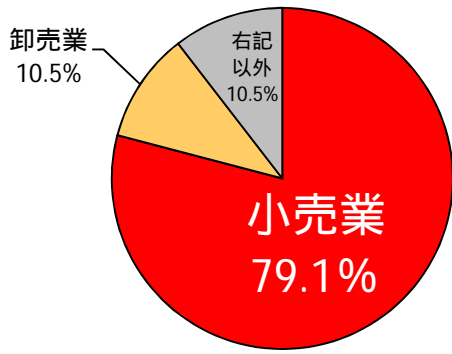
(発生時間別の状況)



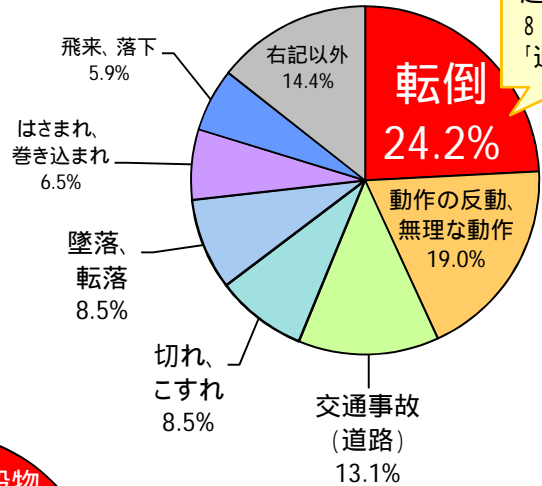
(休業4日以上の死傷災害160件を集計)

令和3年 商業における死傷災害発生状況（川越署）

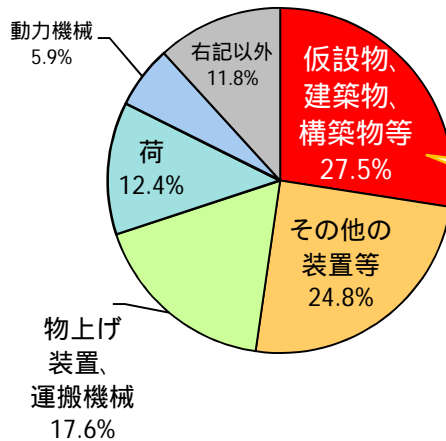
(業種別の割合)



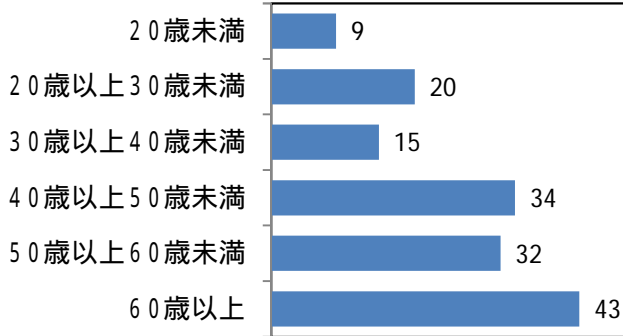
(事故の型別の割合)



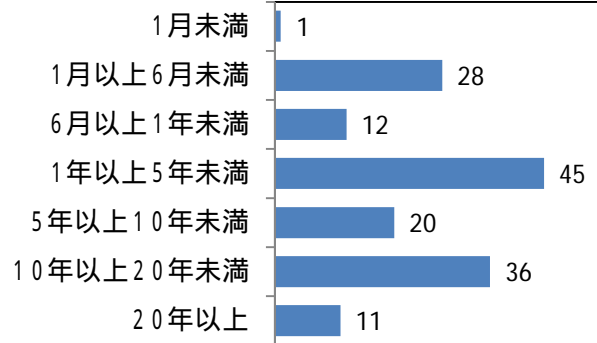
(起因物別の割合)



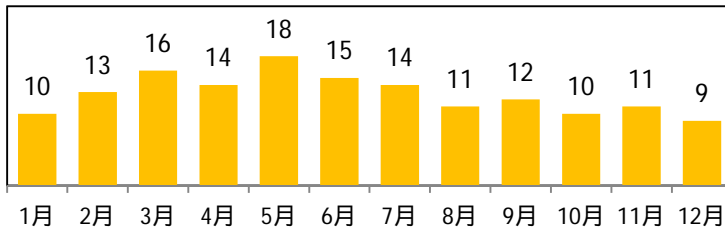
(年齢別の割合)



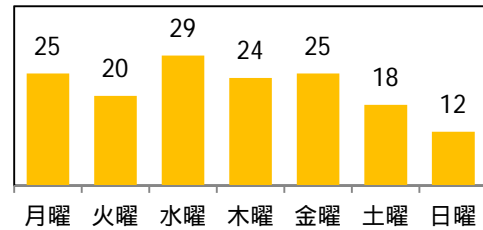
(経験期間別の状況)



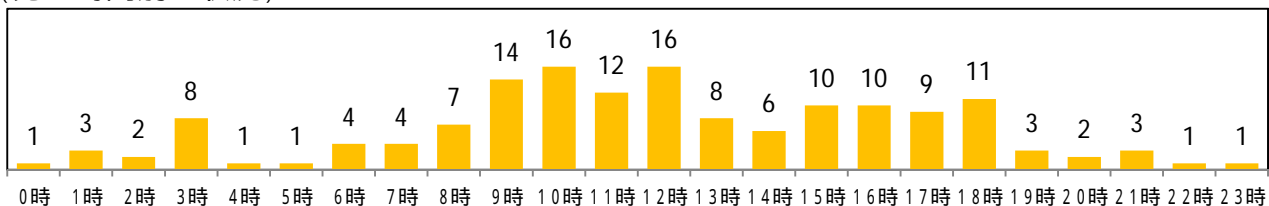
(発生月別の状況)



(発生曜日別の状況)



(発生時間別の状況)



(休業4日以上死傷災害153件を集計)